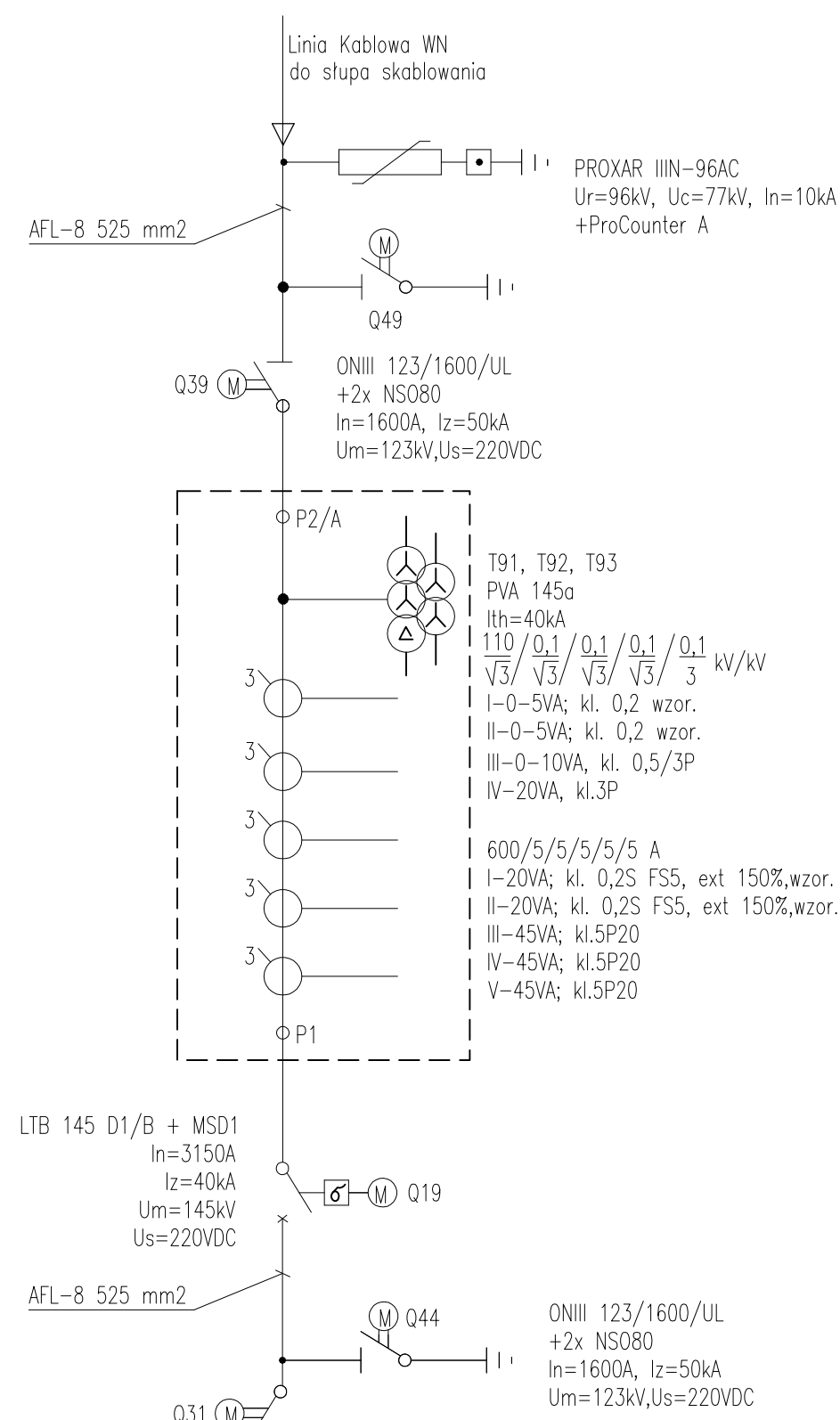


linia 110 kV Kazimierza Wielka
GPZ Kazimierza Wielka



GPO BEJSCE
Un=110kV
Um=126,5kV/Li550/AC230
Sk"pr = 2500MVA
Ik"pr = 13,5kA
II sterfa zabrudzeniowa

linia 110 kV Pinczów 1
GPZ Pinczów 1

